

WAY-BRITE

Affordable, High-Quality, LED Warning Lights

We provide industry-leading products that are easily accessible and backed by a fantastic team of experts and specialists. When safety is a concern, settling for less shouldn't be an option.



Contents

01

LED Work Lights	02/	
Rectangle	02/	
Square	04/	
<hr/>		
LED Work Lights w/ Amber Courtesy Light	06/	
Square	06/	
Round	08/	
<hr/>		
LED Portable Magnetic Work Light	10/	
<hr/>		
LED Surface Mount Strobes	12/	
<hr/>		
Mini-LED Light Bars SAE Class I - 10.6"	14/	
<hr/>		
Back-Up Alarm	15/	
<hr/>		

LED Work Lights - Rectangle

Premium performance high-output (CREE) LEDs offer a higher luminance and longer lifespan

Die-cast aluminum housing & impact resistant polycarbonate lens provides rugged durability

304 stainless steel mounting bracket provides easy installation and anti-corrosion

Withstands heavy vibration, corrosion, moisture and dust

Waterproof rating: IP68

Voltage: 9 – 32V

Temp. rating:
-49°F to +185°F

PART NUMBER

WB-42417

SIZE	3.5" W x 2.8"H x 1.6" D
RAW LUMEN	800
WATTS	10
DIODES	10

PART NUMBER

WB-42418

SIZE	4.3" W x 3.3"H x 1.65"D
RAW LUMEN	1440
WATTS	18
DIODES	18

PART NUMBER

WB-42440

SIZE	6.0"W x 4.8"H x 1.9"D
RAW LUMEN	3400
WATTS	40
DIODES	40

02

LED Work Lights - Rectangle



WB-42417



WB-42418



WB-42440

LED Work Lights - Square

PART NUMBER

WB-42419

SIZE	2.8" W x 3.4"H x 1.4"D
RAW LUMEN	960
WATTS	12
DIODES	4

PART NUMBER

WB-42420

SIZE	3.0" W x 3.7"H x 1.0"D
RAW LUMEN	1000
WATTS	12
DIODES	12

PART NUMBER

WB-42421

SIZE	3.5" W x 4.3"H x 1.2"D
RAW LUMEN	1300
WATTS	16
DIODES	16

PART NUMBER

WB-42422

SIZE	4.4" W x 5.4"H x 1.4"D
RAW LUMEN	2700
WATTS	30
DIODES	30

04



LED Work Lights - Square

WB-42419



WB-42420



WB-42421



WB-42422



LED Work Lights w/ Amber Courtesy Light - Square



Combination square flood & courtesy lights

Premium performance high-output (CREE) LEDs offer a higher luminance and longer lifespan

Bolt mount aluminum base for efficient heat dissipation

304 stainless steel bracket includes a M8 bolt for mounting

Waterproof rating: IP67 / IP69K

Voltage: Mult-voltage
10 – 30VDC

Temp. rating:
-40°F to +149°F

PART NUMBER

WB-42411

SIZE	4.22"W x 5.12"H x 2.34"D
RAW LUMEN	1800
WATTS	18
DIODES	9

PART NUMBER

WB-42412

SIZE	4.22"W x 5.12"H x 2.34"D
RAW LUMEN	4500
WATTS	45
DIODES	9

PART NUMBER

WB-42413

SIZE	4.53"W x 5.88"H x 2.90"D
RAW LUMEN	8000
WATTS	80
DIODES	16

06

LED Work Lights w/ Amber Courtesy Light - Square



WB-42411



WB-42412



WB-42413

07

LED Work Lights w/Amber Courtesy Light - Round



Combination round flood & courtesy lights

Premium performance high-output (CREE) LEDs offer a higher luminance and longer lifespan

Bolt mount aluminum base for efficient heat dissipation

304 stainless steel bracket includes a M8 bolt for mounting

Waterproof rating: IP67 / IP69K

Voltage: Mult-voltage
10 – 30VDC

Temp. rating:
-40°F to +149°F

08

PART NUMBER

WB-42414

SIZE	4.53"W x 4.92"H x 2.36"D
RAW LUMEN	2500
WATTS	25
DIODES	9

PART NUMBER

WB-42415

SIZE	4.53"W x 4.92" H x 2.36"D
RAW LUMEN	4500
WATTS	45
DIODES	9

PART NUMBER

WB-42416

SIZE	4.53"W x 4.92" H x 2.83"D
RAW LUMEN	8000
WATTS	80
DIODES	16

LED Work Lights w/Amber Courtesy Light - Round



WB-42414



WB-42415



WB-42416

LED Portable Magnetic Work Light

Beam pattern: Spot/Flood

LED brightness
adjustability: 30%, 70% &
100%

Flash pattern: slow /
medium / fast

Rechargeable, large
capacity, 4000mA lithium
battery w/ DC input
charging 1A

USB output w/ On-Off
switch control for charging

Lifespan: 30,000 hours

Waterproof rating: IP67

Temp. rating:
-22°F to +140°F

PART NUMBER

WB-62401

SIZE

4.33"W x 4.33"D x 8.58"H

RAW LUMEN

1200

WATTS

12

DIODES

4

COLOR

White

10

LED Portable Magnetic Work Light



LED Surface Mount Strobes

Tough polycarbonate lens with UV resistant

Base: Die-cast aluminum for heat dissipation

Reverse polarity protection




Multiple units can be synchronized

IP Rating: IP67/ IP69K rating make it durable




Work temperature: -22°F to +140°F

12




3 LED'S / 26 FLASH PATTERNS

PART NUMBER	COLOR	VOLTS	MOUNT	SIZE
WB-42403-A	Amber 			
WB-42403-C	Clear 	12-24 VDC	Surface	3.0"L x 1.1" W x 0.3" H
WB-42403-G	Green 			

4 LED'S / 26 FLASH PATTERNS

PART NUMBER	COLOR	VOLTS	MOUNT	SIZE
WB-42404-A	Amber 			
WB-42404-C	Clear 	12-24 VDC	Surface	3.8"L x 1.1" W x 0.3" H
WB-42404-G	Green 			

6 LED'S / 26 FLASH PATTERNS

PART NUMBER	COLOR	VOLTS	MOUNT	SIZE
WB-42406-A	Amber 			
WB-42406-C	Clear 	12-24 VDC	Surface	4.7"L x 1.1" W x 0.3" H
WB-42406-G	Green 			

12 LED'S / 21 FLASH PATTERNS

PART NUMBER	COLOR	VOLTS	MOUNT	SIZE
WB-42407-AW	Amber/White 	12-24 VDC	Surface	4.7"L x 1.1" W x 0.3" H
WB-42407-AG	Amber/Green 			

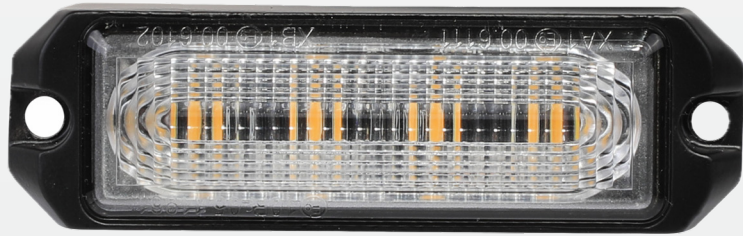


LED Surface Mount Strobes

WB-42403-A
WB-42403-C
WB-42403-G



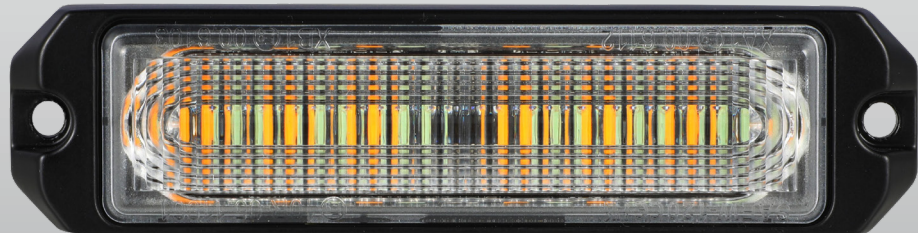
WB-42404-A
WB-42404-C
WB-42404-G



WB-42406-A
WB-42406-C
WB-42406-G



WB-42407-AW
WB-42407-AG















Mini-LED Light Bars SAE Class I - 10.6"



BRACKET MOUNT



PART NUMBER	DOMES COLOR	LED COLOR	VOLTS	MOUNT	SIZE
WB-52401-CA	Clear 	Amber 	12-24 VDC	Vacuum (includes cigarette cord w/ switched plug)	10.6"L x 6.3"W x 2.6"D
WB-52401-CAW	Clear 	Amber/ Clear 			
WB-52401-CAG	Clear 	Amber/ Green 			
WB-52402-CA	Clear 	Amber 	12-24 VDC	Permanent mount bracket	10.6"L x 6.3"W x 2.3"D
WB-52402-CAW	Clear 	Amber/ Clear 			
WB-52402-CAG	Clear 	Amber/ Green 			

Tough polycarbonate lens & base with UV resistance

Vibration resistant design for external & internal use

Operating temperature: -22°F to + 140°F

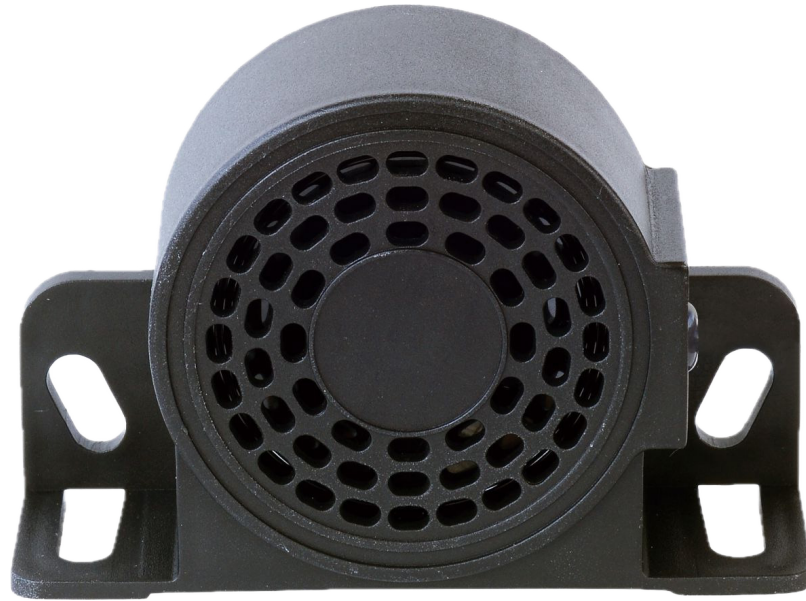
Approvals: SAE Class I / Rated: IP67

Reverse polarity protection

26 flash patterns

14

Back-Up Alarm



PART NUMBER	DECIBELS	VOLTS	SIZE
WB-42410	92-107	12-80 VDC	4"L x 1.4" W x 2,7" H

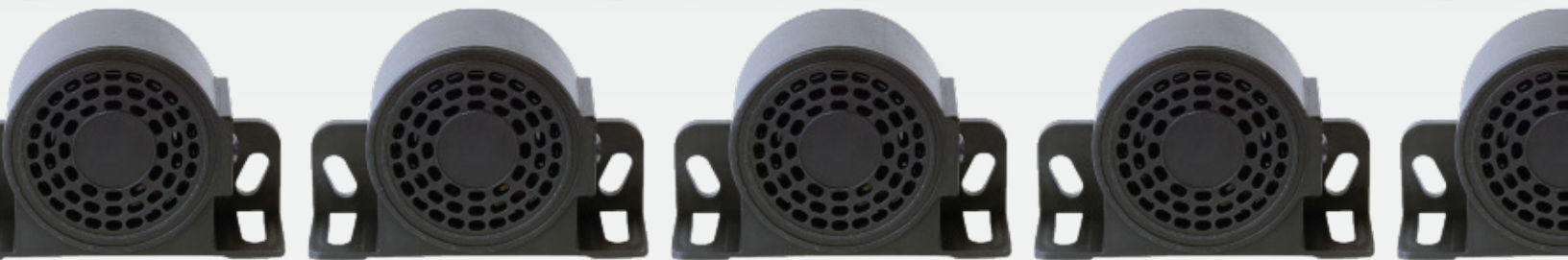
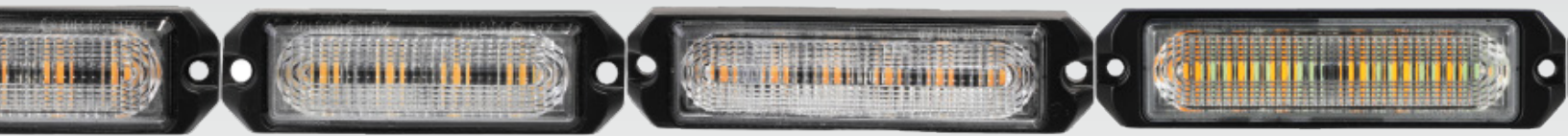
Programmable to emit two distinct sounds and decibel levels of 87, 97 or 107

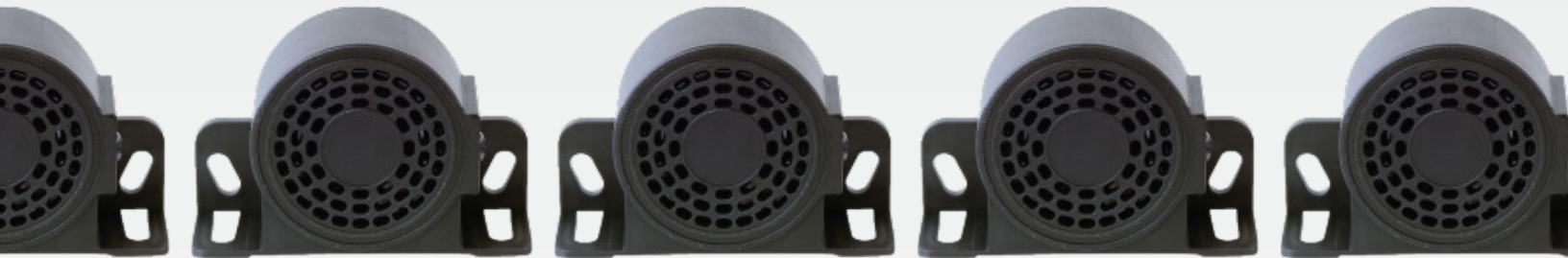
Offers a combination of a beeping sound & white noise sound

Working temperature: -22°F to +140°F

IP Rating: IP67

15







WAY-BRITE

Safety Products to Lead Your Way



1-800-989-9632



sales@go2TSC.com
www.way-brite.com



1800 Thunderbird
Troy, Michigan 48084

24-Month Limited Warranty on all items with the exception of WB-62401 which is covered for 12 months.

WAY-BRITE

